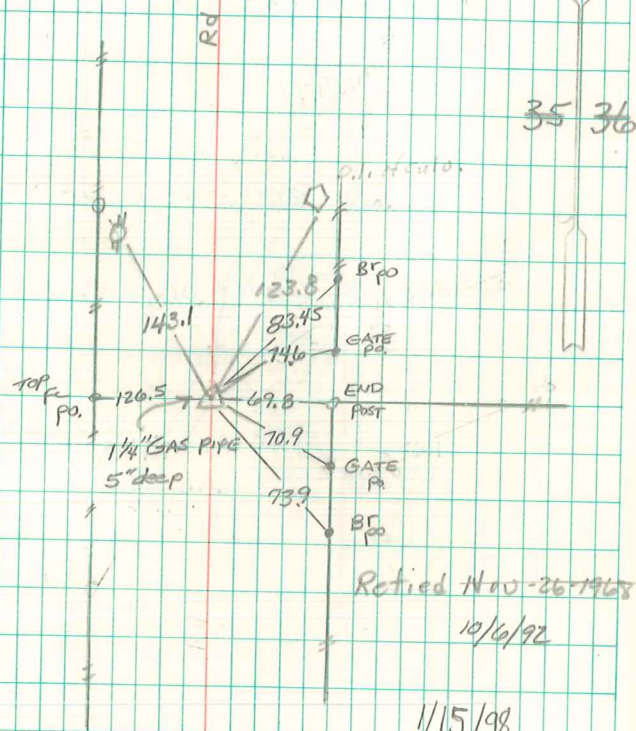


Re established Cor.
 set c.m. on direct Line with
 between stones

set c.m. over 1-2" Δ tile
 " crec stake on top c.m.

E $\frac{1}{2}$ cor 35-77-19
 set- 7-5-41
 Notes - Kennedy
 Party - Shore & Luther



Retied Nov-26-1968

10/6/92

1/15/98
 Leroy Nugent