

KAREN SCHWANEBECK, RECORDER  
MARION COUNTY IOWA

Prepared By: J. Brian Morrissey, Morrissey Surveying & Consulting, LLC, 1405 Hwy. G28, Otley, Ia. 50214, 515-480-2551

# UNITED STATES PUBLIC LAND SURVEY CORNER CERTIFICATE OF

Land Survey Monuments situated in Section 9, Township 77N, Range 19W, of the Fifth Principal Meridian, Marion County, Iowa.  
Previously recorded in Bk. 2001, P. 4958 in the County Recorder's Office.  
(book, page, document number, etc.)

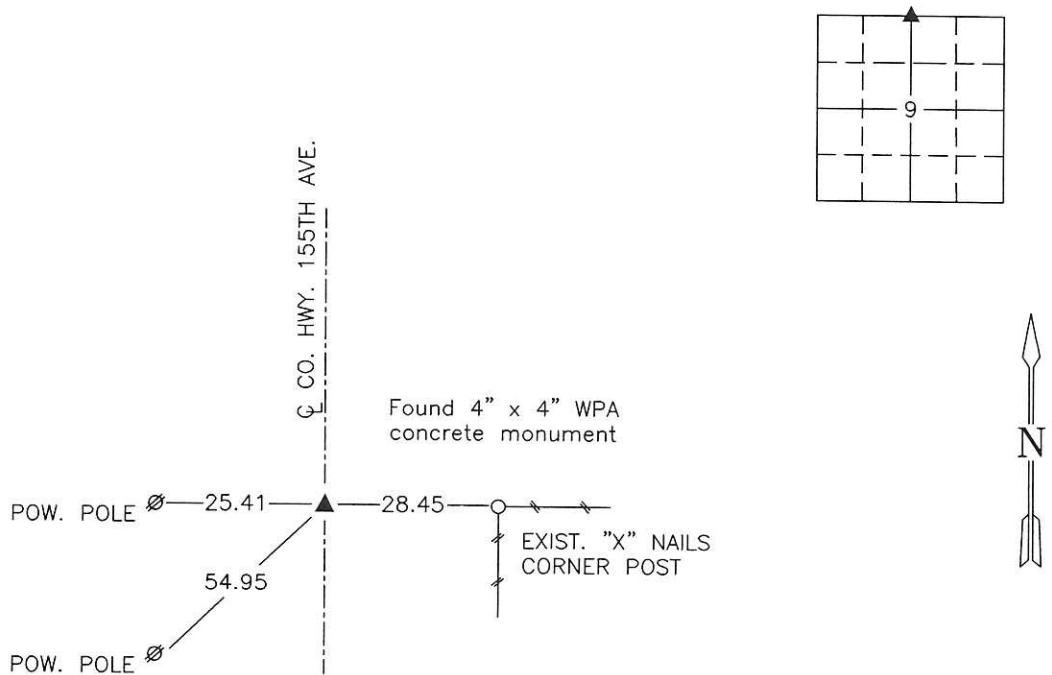
(Show reason for preparing this certificate, the evidence and detailed procedures used in establishing the corner positions and monumentation found or placed.)

Monument Description and Remarks: Found 4" x 4" WPA concrete monument with bent 5/8" x 8" rebar near monument. Set 5/8" x 8" rebar on N side of concrete monument. Previous ties altered or obliterated.

This Corner was used for a Plat of Survey in the NW 1/4 of the NW 1/4 of Sec. 9, recorded in Bk. 2019, P. 1601.

## PLAN VIEW

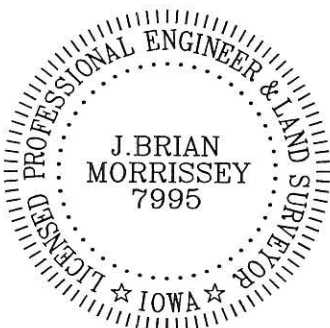
(Show a minimum of three reference ties to durable physical objects, relevant monuments and physical conditions that will enable recovery of the corner.)



NE Corner, NW 1/4, Section 9

Date of Survey: 9/6/19

NOTE: ALL TIES TO BRASS DISK OR YELLOW/ORANGE SURVEY MARKER UNLESS NOTED.



I hereby certify that this land surveying document was prepared and the related survey work was performed by me or under my direct personal supervision and that I am a duly Licensed Land Surveyor under the laws of the state of Iowa.

Signature: J. Brian Morrissey Date: 4/9/20  
J. Brian Morrissey

License number 7995.

My license renewal date is December 31, 2021

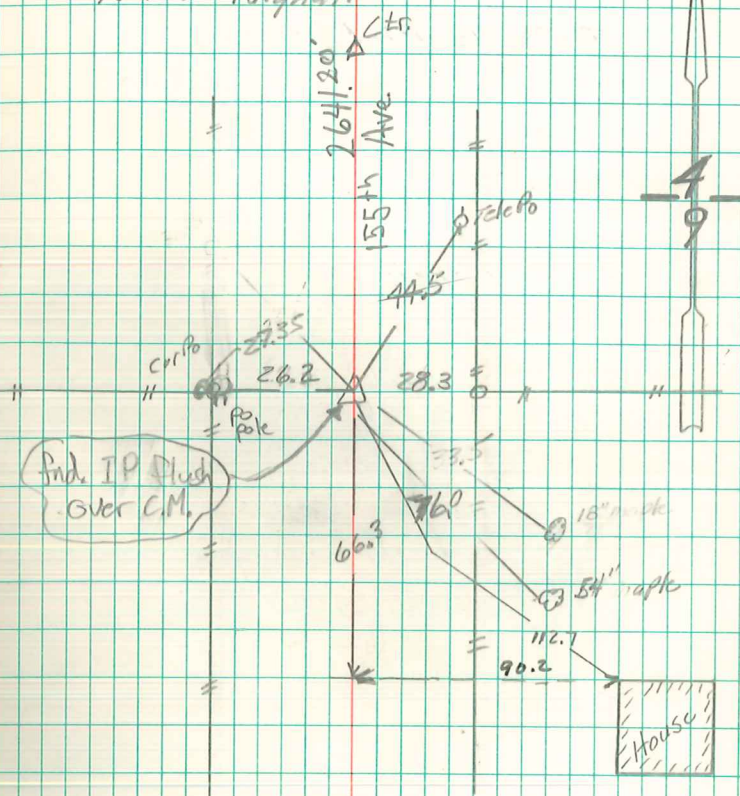
999-18-1/5

Redbook - Ret Brian Morrissey

Found  $\frac{1}{2}$  Brick on top of sand  
stone  $11" \times 10" \times 5"$  over 2-2" Watkins  
Tile.

Set C.M. over 1-2" Tile in Position  
" sandstone on North side c.m.

$N\frac{1}{2}$  Cor 9-77-19  
Set-10-23-40  
Notes - Wignall



FD CONC ABOUT 5" DEEP  
ADDED ANGLE IRON ON  
ALL SIDES 10/6/42  
ALICE DAVIS 8/8/01